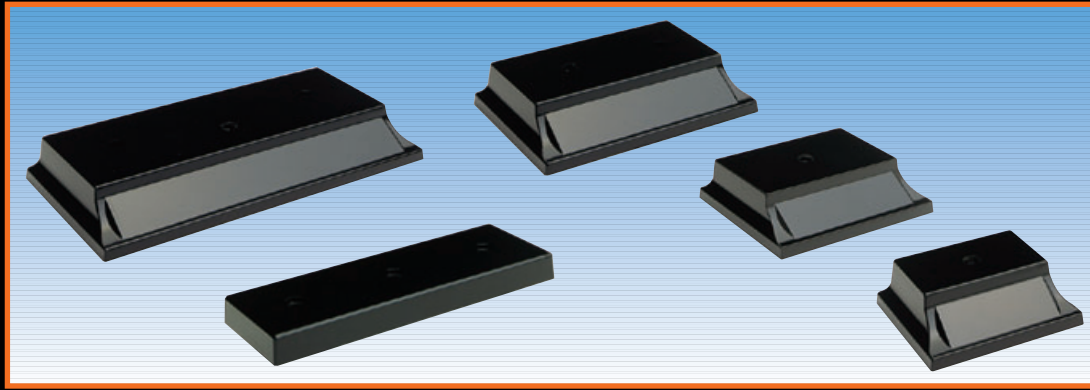


**SCULPTED EBONY BASES**



PDU's line of sculpted bases is offered in a high gloss ebony finish. Ebony offers an ideal solution to elegant, yet economical, families of awards.

**10168K**  
4 1/4" X 8 1/2" X 1"  
(30-AA-9)

**10187K**  
2 3/4" X 7 3/4" X 1"  
(50-Y-9)

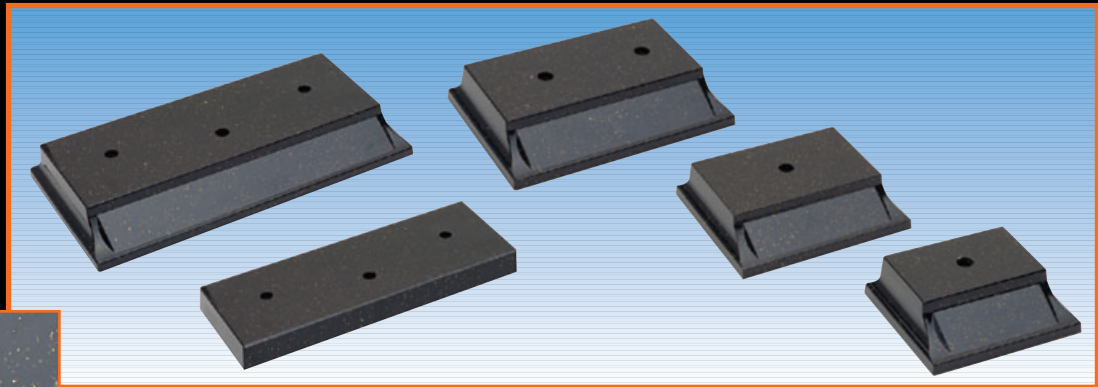
**10165K**  
3 3/4" X 5 1/2" X 1"  
(50-W-9)

**10164K**  
3 3/4" X 4 1/2" X 1"  
(50-U-9)

**10163K**  
3 3/4" X 3 1/2" X 1"  
(50-R-9)

**SCULPTED GOLD GLITTER™ BASES**

The Gold Glitter™ bases from PDU are part of the sculpted base line. These bases are created using actual sprinkles of gold glitter embedded in the base. A truly unique, but economical, solution for the ultimate recognition.



**10168MG**  
4 1/4" X 8 1/2" X 1"  
(30-Z-9)

**10187MG**  
2 3/4" X 7 3/4" X 1"  
(50-X-9)

**10165MG**  
3 3/4" X 5 1/2" X 1"  
(50-V-9)

**10164MG**  
3 3/4" X 4 1/2" X 1"  
(50-T-9)

**10163MG**  
3 3/4" X 3 1/2" X 1"  
(50-Q-9)



**SYNERGY SERIES™ BASES**



**12114KM**  
4" X 3" X 3/4"  
(48-X-9)

**12118KM**  
8" X 3 1/4" X 3/4"  
(24-DD-9)

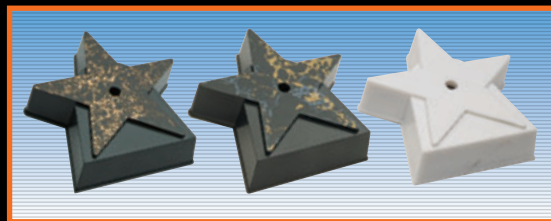
**12112KM**  
12" X 4" X 3/4"  
(12-NN-9)

**12114K**  
4" X 3" X 3/4"  
(48-U-9)

**12118K**  
8" X 3 1/4" X 3/4"  
(24-AA-9)

**12112K**  
12" X 4" X 3/4"  
(12-KK-9)

**ALL STAR BASES**  
4" X 4"



**20441GR**  
GOLD RUSH  
(50-R-9)

**20441KM**  
BLACK MARBLE  
(50-R-9)

**20441-M**  
WHITE MARBLE  
(50-P-9)