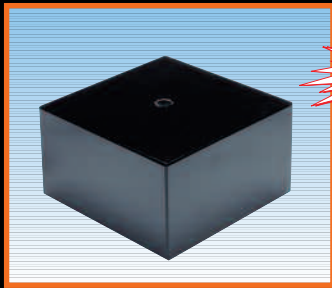


NATURAL MARBLE EBONY CUP BASES

PDU offers an elegant natural marble cup base in three sizes.



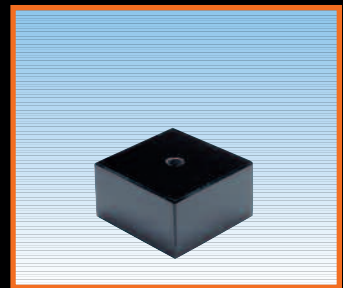
7565-K
3" X 5½" X 5½"
(2-MM-9)



7555-K
2½" X 4½" X 4½"
(6-GG-9)



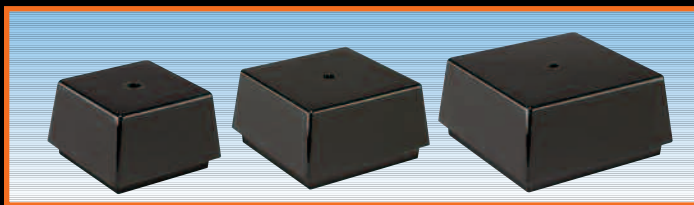
7545-K
2" X 3½" X 3½"
(6-AA-9)



7535-K
1½" X 2¾" X 2¾"
(12-V-9)

NATURAL MARBLE CUP BASES ARE INCLUDED IN "FREE FREIGHT PROGRAM"

EBONY

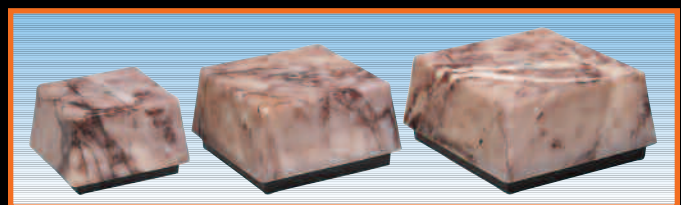


6535-K
3¼" X 3¼" X 2¾"
1½ LBS. (24-EE-9)

6545-K
4¼" X 4¼" X 2⅝"
3 LBS. (12-LL-9)

6555-K
5½" X 5½" X 2⅞"
3½ LBS. (8-NN-9)

AZTEC MARBLE

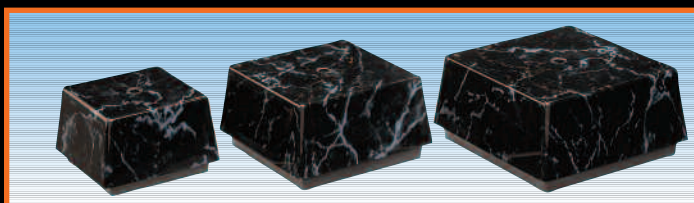


6535-AM
3¼" X 3¼" X 2¾"
1½ LBS. (24-GG-9)

6545-AM
4¼" X 4¼" X 2⅝"
3 LBS. (12-NN-9)

6555-AM
5½" X 5½" X 2⅞"
3½ LBS. (8-PP-9)

BLACK MARBLE

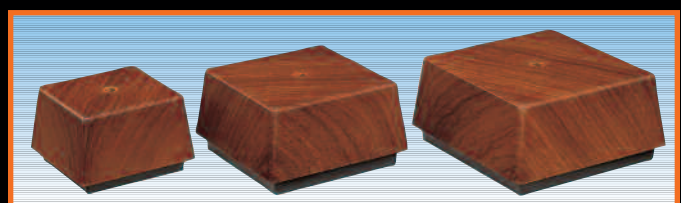


6535-KM
3¼" X 3¼" X 2¾"
1½ LBS. (24-GG-9)

6545-KM
4¼" X 4¼" X 2⅝"
3 LBS. (12-NN-9)

6555-KM
5½" X 5½" X 2⅞"
3½ LBS. (8-PP-9)

EXOTIC WALNUT



6535-EW
3¼" X 3¼" X 2¾"
1½ LBS. (24-GG-9)

6545-EW
4¼" X 4¼" X 2⅝"
3 LBS. (12-NN-9)

6555-EW
5½" X 5½" X 2⅞"
3½ LBS. (8-PP-9)

CHINA MARBLE

China marble is an economical alternative for the assembly of awards. The elegant white and black marble is offered in the most popular sizes from a figure on a base to a two-post trophy base and lid set.



PART#	DESCRIPTION	SIZE	STD PK
2041K, M	BASE - 1 HOLE, CENTER	2" X 3" X ¾"	80
2441K, M	BASE - 1 HOLE - CENTER, COUNTERSUNK	2" X 3" X ¾"	80
12441K, M	BASE - 1 HOLE - CENTER, COUNTERSUNK	2" X 4" X ¾"	60
12452K, M	BASE - 2 HOLE - COUNTERSUNK-IN LINE	2 ½" X 5" X ¾"	34
12473K, M	LID - 3 HOLES - COUNTERSUNK-IN LINE	2 ½" X 7 ½" X ¾"	20
12453K, M	BASE - 3 HOLES - COUNTERSUNK-IN LINE	3" X 7 ½" X ¾"	20

COMBINATION CODE = 9
(SEE P/L PAGE 7)

CHINA MARBLE IS EXCLUDED FROM "FREE FREIGHT PROGRAM"